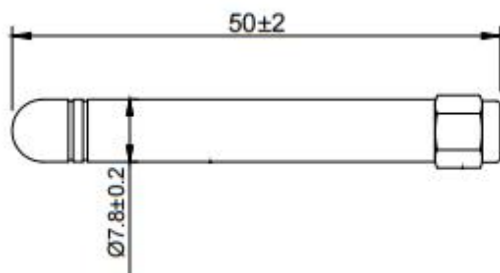


LTE Antenna

JCG401-1-WW



DIMENSIONS



Unit: MM



Jinchang Electron Global Service

SPECIFICATIONS

Item		Specifications
Antenna	Frequency Range	698~960/1710~2700MHz
	Polarization	Linear
	Gain	3dBi
	V.S.W.R	<3.0
	Impedance	50 Ω
	Connector	SMA male
Environmental	Operating Temperature	-40°C~+65°C
	Vibration	10 to 55Hz with 1.5mm amplitude 2hours
	Environmentally Friendly	ROHS Compliant

Zhejiang JC Antenna Co.,Ltd

Add: 398#, Zhenye Road, South Street, Jiaying, Zhejiang, China

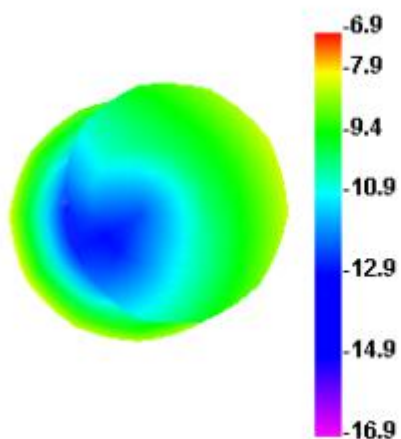
Http:// www.jinchanggps.com

E-mail: sale8@jinchanggps.com

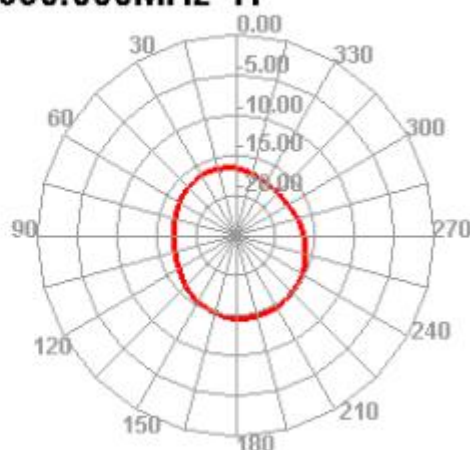
Tel: 86-0573-83692157/83692605/83958637 Fax:86-0573-83958635

Radiation Pattern

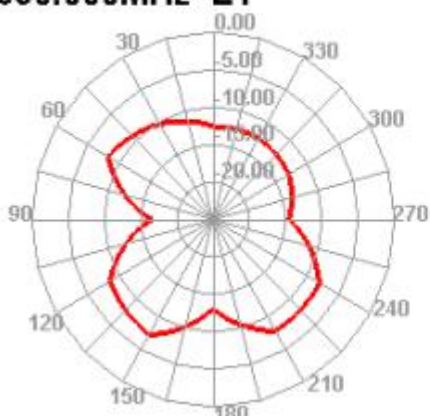
690.000MHz



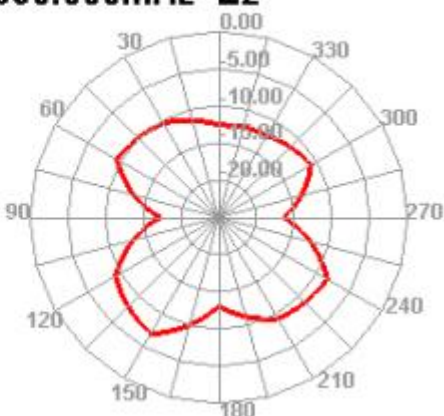
690.000MHz H



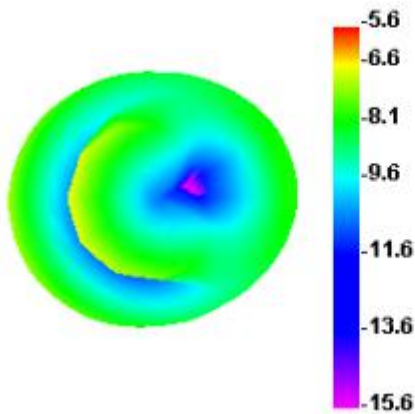
690.000MHz E1



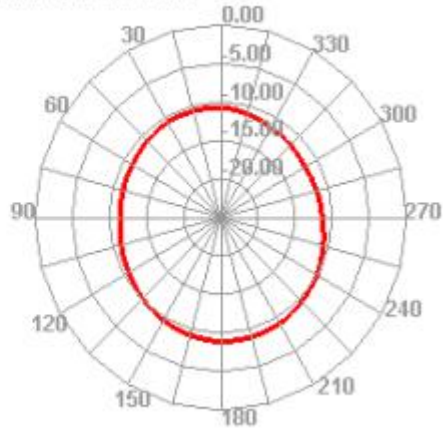
690.000MHz E2



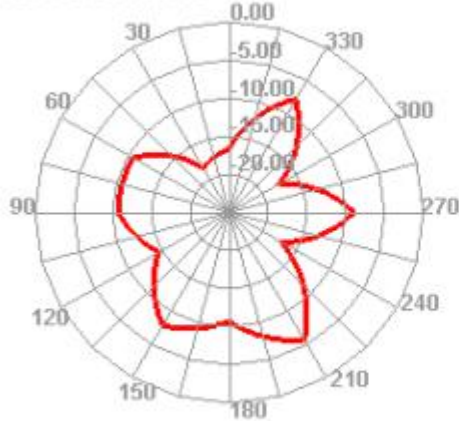
820.000MHz



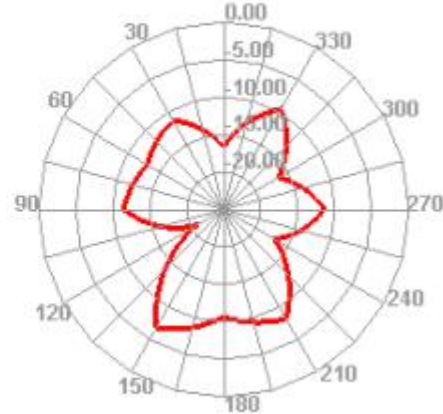
820.000MHz H



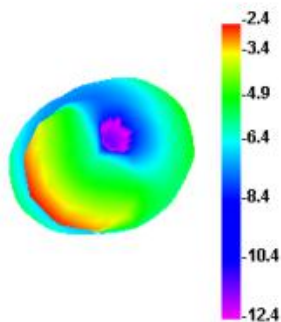
820.000MHz E1



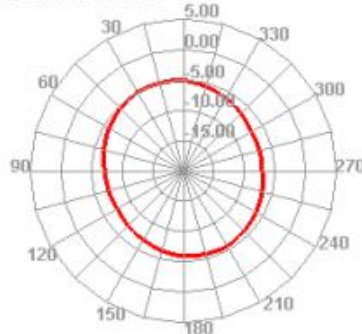
820.000MHz E2



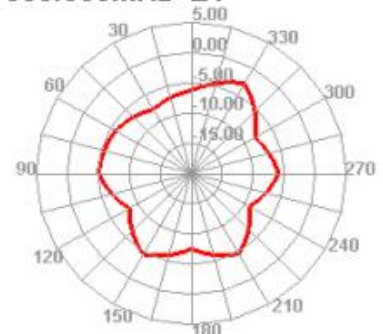
880.000MHz



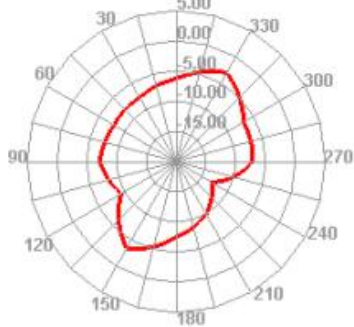
880.000MHz H



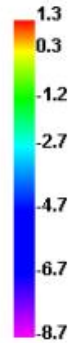
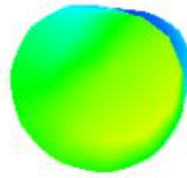
880.000MHz E1



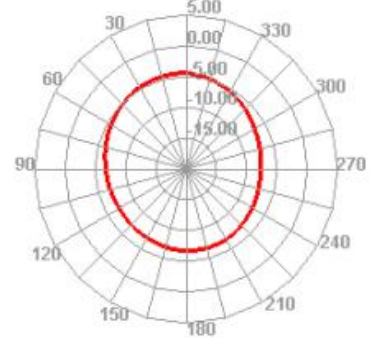
880.000MHz E2



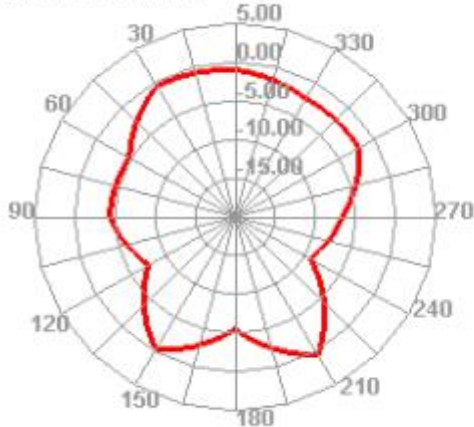
960.000MHz



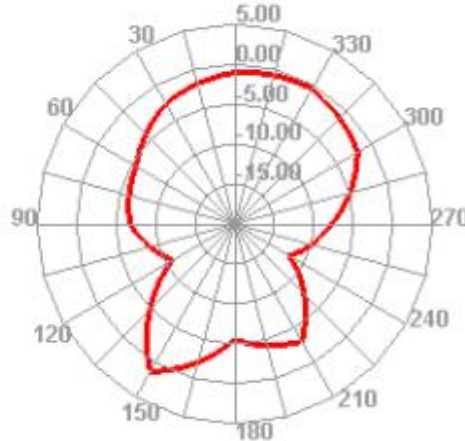
960.000MHz H



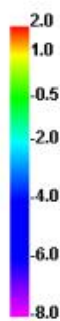
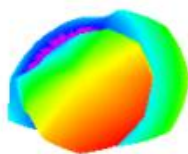
960.000MHz E1



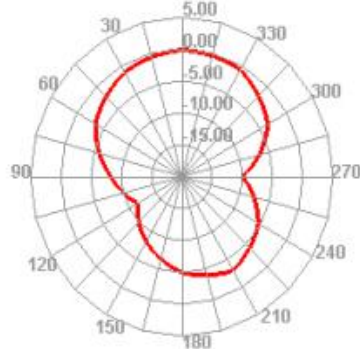
960.000MHz E2



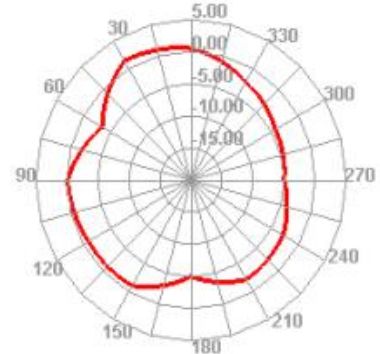
1700.000MHz



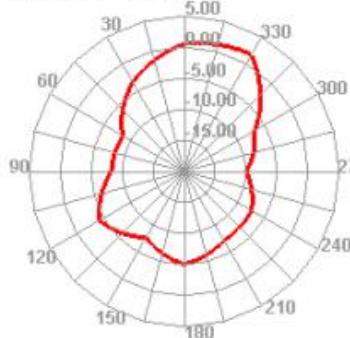
1700.000MHz H



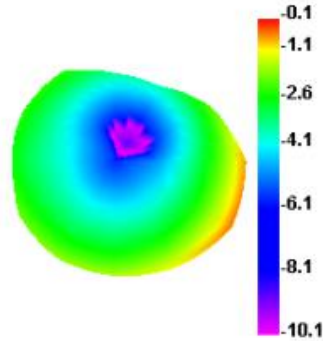
1700.000MHz E1



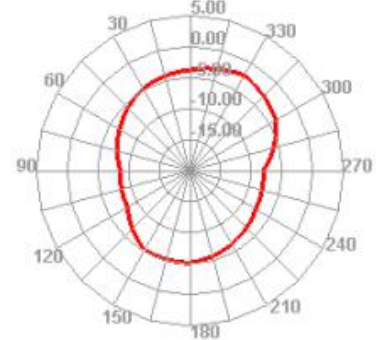
1700.000MHz E2



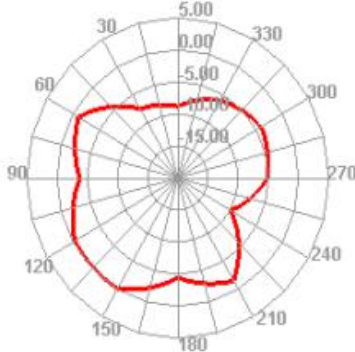
1850.000MHz



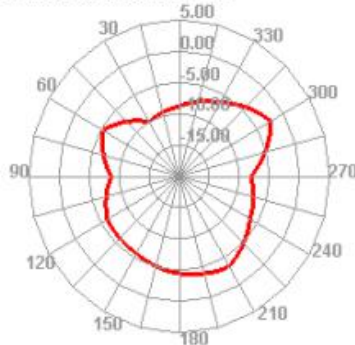
1850.000MHz H



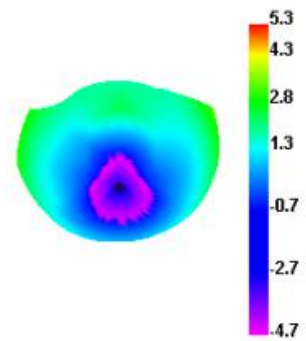
1850.000MHz E1



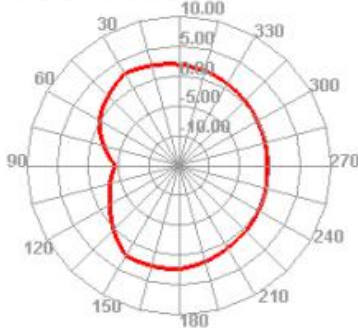
1850.000MHz E2



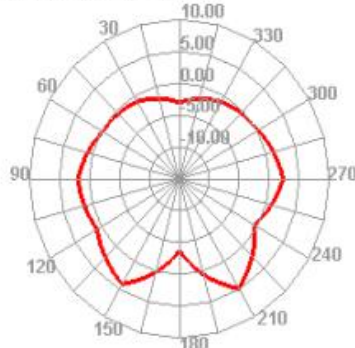
2700.000MHz



2700.000MHz H



2700.000MHz E1



2700.000MHz E2

