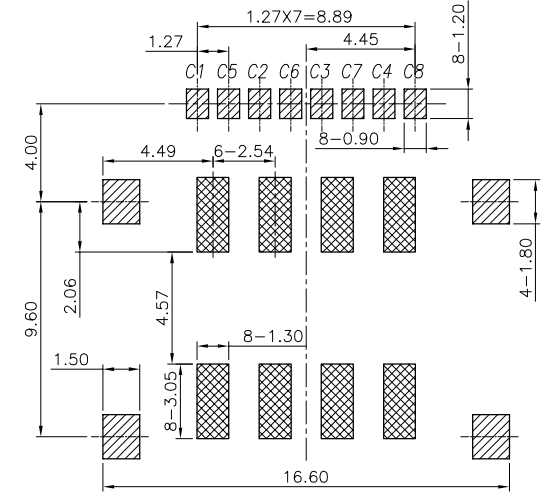
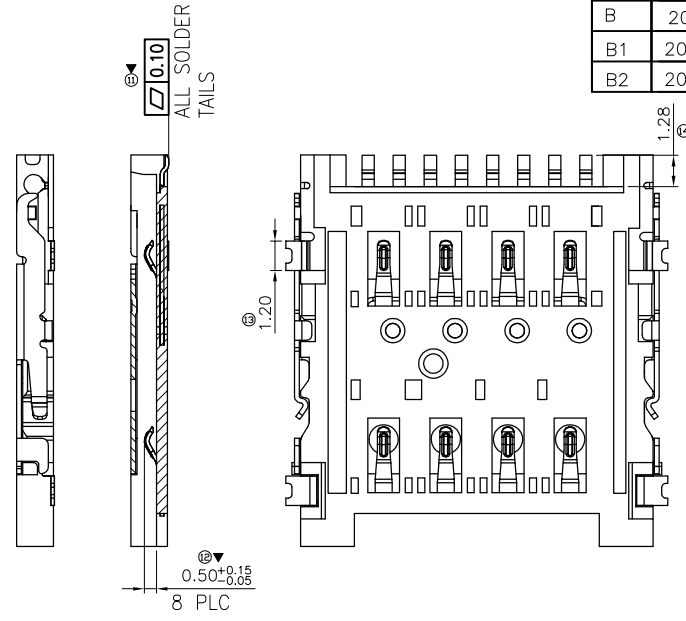
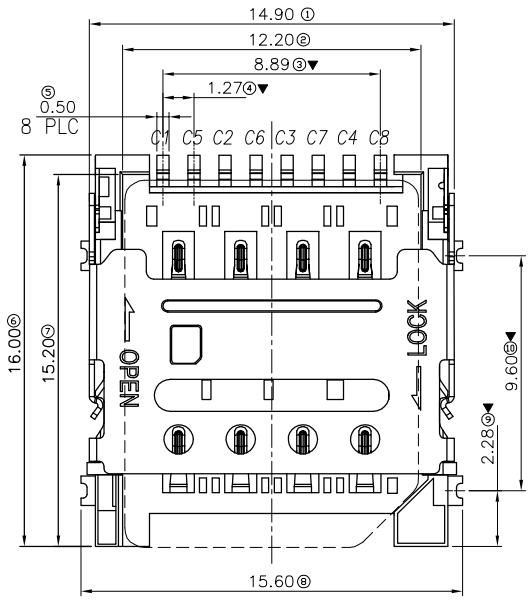
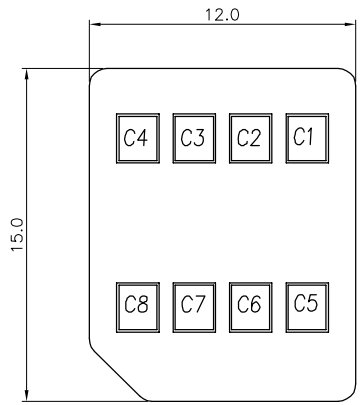
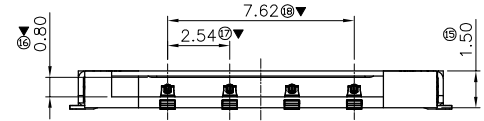


REV.	DATE	ECN NO.	MODIFICATION	APPROVER
A	2018.03.06		NEW	Jason
B	2020.7.2		依实物更改图纸	Jason
B1	2021.03.10	RD00321031003	更新图纸	Jason
B2	2024.01.05	RD00324010501	外壳增加扣点, 同时更新图纸	Abel



RECOMMENDED PCB LAYOUT  
 GENERAL TOLERANCE ±0.05  
 Solder Area (diagonal hatching)  
 Keep Out Area (cross-hatching)

- Note:**
- Material:**
    - Housing: LCP,UL94V-0 Color:Black
    - Contact:C5210  
Gold Flash plating at contact area  
Gold Flash plating at solder area  
30U"Min Nickel under plating over all
    - Shell:SUS301,No Plating.
  - Electrical:**
    - Current Rating:0.5A
    - Voltage Rating:10V DC
    - Contact Resistance:50mΩ Max
    - Dielectric withstanding voltage:500V AC
    - Insulation Resistance:1000MΩ Min
  - Mechanical characteristics:**
    - Durability:5000 cycles
  - Environment characteristics:**
    - Operating Temperature:-40~+85℃
- Major Dimension:▼  
 Products meet RoHS environmental requirements



SIM pin Assignment	
PIN#	Name
C1	VCC
C2	RST
C3	CLK
C4	RESERVED
C5	GND
C6	VPP
C7	I/O
C8	RESERVED

GENERAL TOLERANCE			UNITS mm	NAME (INTENDED USE) 卡座
SELECT	TOL	ON.		
X.XXX	±0.10	±0.15	±0.20	PART NO. (INTENDED USE) SI33C-03201
X.XX	±0.15	±0.20	±0.25	
X.X	±0.20	±0.25	±0.30	APPD: Jason
X.	±0.25	±0.30	±0.50	
ANGLE	±2'			CHKD: Abel
				DR: HUJING

深圳市爱特姆科技有限公司 SHENZHEN ATOM TECHNOLOGY CO., LTD.		
TITLE: Customer Drawing For MICRO SIM CARD 8P H=1.5mm 卡座		
DWG NO.: ATOM-A04671		
SCALE	SHEET	REV.
1:1	1/1	B2