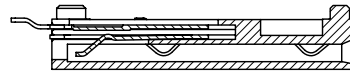
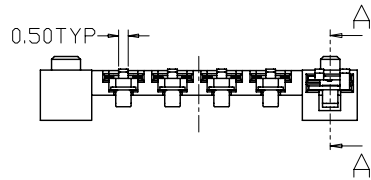


REV.	DATE	ECN.NO	MODIFY.CONTENT



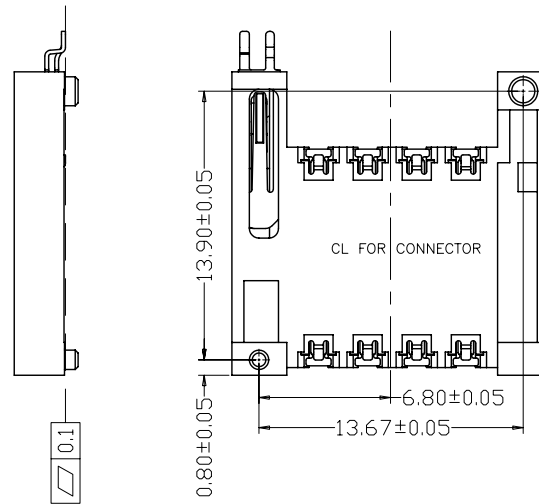
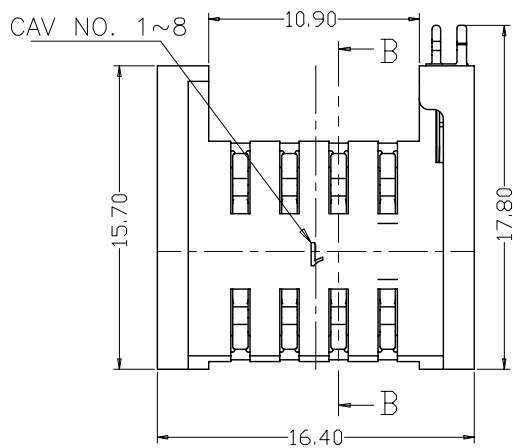
SEC A-A

1,Notes:

- 1.1 Material:Phosphor Brozne (C5210R)
- 1.2 SIM Card connector,Type 1,8Pin

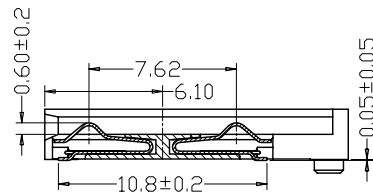
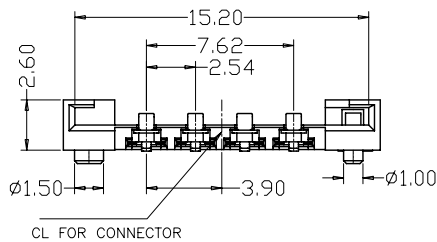
2,Physical:

- 2.1 Housing: LCP UL 94V-0
- 2.2 Terminal: Over Nickel Plated(50~80u"), Gold(1~3u") at Solder Tail And Contact Area.
- 2.3 CD Terminal: Over Nickel Plated(50~80u"), Tin 100u" Min. at Solder Tail, Gold(1~3u") on Contact Area Plating.



3,Specifications:

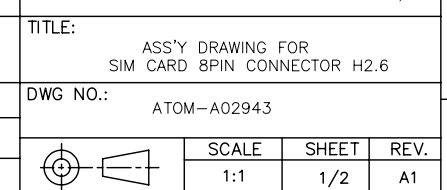
- 3.1 Voltage Current rating:1A. 50V AC
- 3.2 Insulation Resistance:1000Mohm MIN
- 3.3 Contact Withstanding Voltage:AC 500V For 1Minute
- 3.4 Temperteure Rating:-40° To +85°
- 3.5 Durability: 5000 cycles Min



SEC B-B

GENERAL TOLERANCE				UNITS	NAME(INTENDED USE)	
SELECT				mm	SIM CARD 8PIN CONNECTOR	
ON.	TOL.	1	2	3	MAT'L	SIM CARD 8PIN CONNECTOR
X.XXX	±0.10	±0.05	±0.15		FINISH	
X.XX	±0.20	±0.13	±0.25		Q'TY	
X.X	±0.25	±0.25	±0.50			
X.	±0.30	±0.38	±1.00			
ANGLE	±2°					
					PART NO.(INTENDED USE)	
					SI48C-08201	
					TITLE:	
					ASS'Y DRAWING FOR SIM CARD 8PIN CONNECTOR H2.6	
					APPD:	
					DWG NO.:	
					ATOM-A02943	
					CHKD:	
					DR: David	
					SCALE	
					1:1	
					SHEET	
					1/2	
					REV.	
					A1	

**ATOM** 深圳市爱特姆科技有限公司  
SHENZHEN ATOM TECHNOLOGY CO.,LTD.

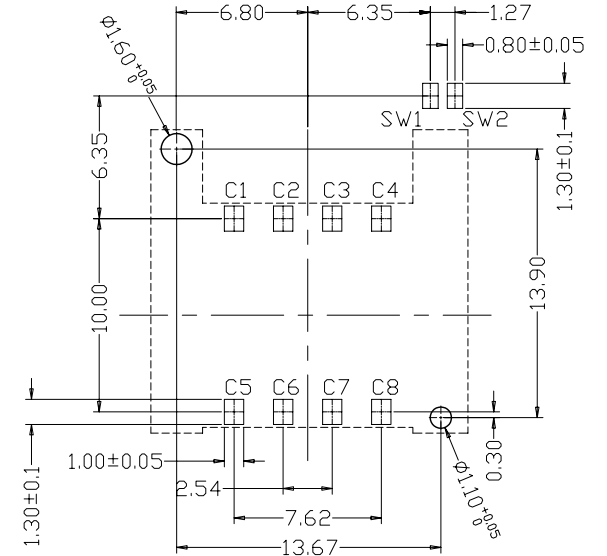
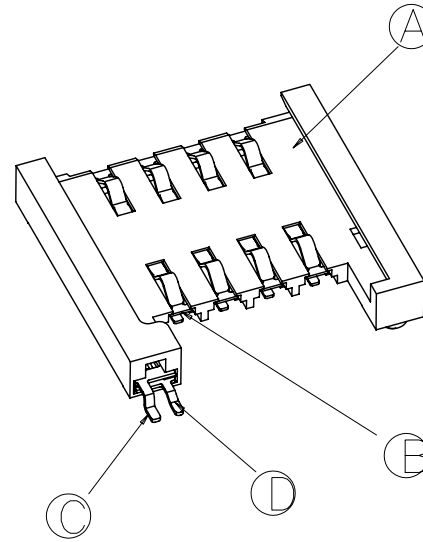
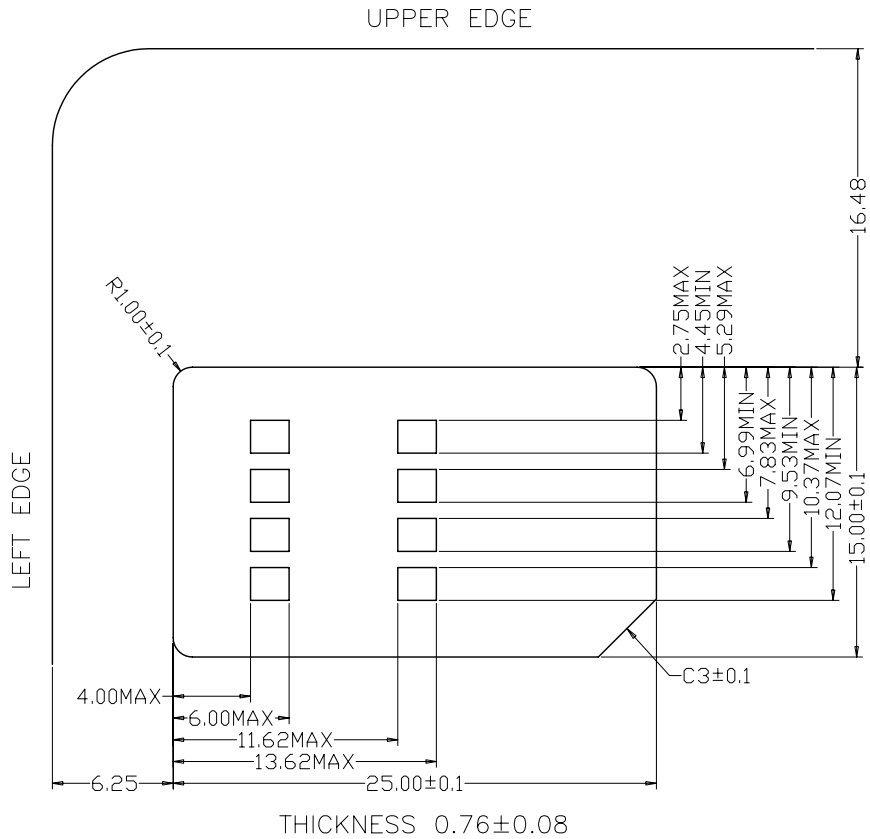


ACAD GENERATED DRAWING. DON'T CHANGE BY HAND

REV.	DATE	ECN.NO	MODIFY.CONTENT

Contact No.	Assignment	Description
C1	Vcc	Power Voltage
C2	RST	Reset Signal
C3	CLK	Clock Signal
C4	RFU	Reservefor future use
C5	GND	Power and Signal Ground
C6	Vpp	Programing Voltage
C7	I/O	Serial Data input/output
C8	RFU	Reservefor future use
SW1	CD1	Swith contact 1 of card detector
SW2	CD2	Swith contact 2 of card detector

SIM CARD CONTACT LOCATION (GSM11.11)



REFERENCE PCB LAYOUT

Ⓐ	CD TERMINAL B	C5210R	1 PCS	
Ⓒ	CD TERMINAL A	C5210R	1 PCS	
Ⓑ	TREMINAL	C5210R	8 PIN	
Ⓐ	HOUSING	LCP	1 PCS	
ITEM	PART NAME	MATERIAL	Q'TY	REMARK

GENERAL TOLERANCE			UNITS	NAME(INTENDED USE)	
SELECT			mm	SIM CARD 8PIN CONNECTOR	
ON.	TOL.	1 2 3	MAT'L	SIM CARD 8PIN CONNECTOR	
X.XXX	±0.10	±0.05 ±0.15	FINISH	PART NO.(INTENDED USE)	
X.XX	±0.20	±0.13 ±0.25		SI48C-08201	
X.X	±0.25	±0.25 ±0.50	Q'TY	APPD:	
X.	±0.30	±0.38 ±1.00		CHKD:	
ANGLE	±2°		DR:	David	

TITLE:		<b>ATOM</b> 深圳市爱特姆科技有限公司 SHENZHEN ATOM TECHNOLOGY CO.,LTD.		
DWG NO.:				
SCALE		ATOM-A02943		
1:1	SHEET	2/2		REV.
				A1